

Block 76 – Rachel Rossi

General instructions :

The measurements given for cutting include seam allowances of 7 mm ($\frac{1}{4}$ "), rounded to 15 mm ($\frac{1}{2}$ ") for two seams. Make any necessary adjustments.

The measurements in the explanatory diagrams do not include seam allowances, except for those diagrams that specify "*Seam allowances included".

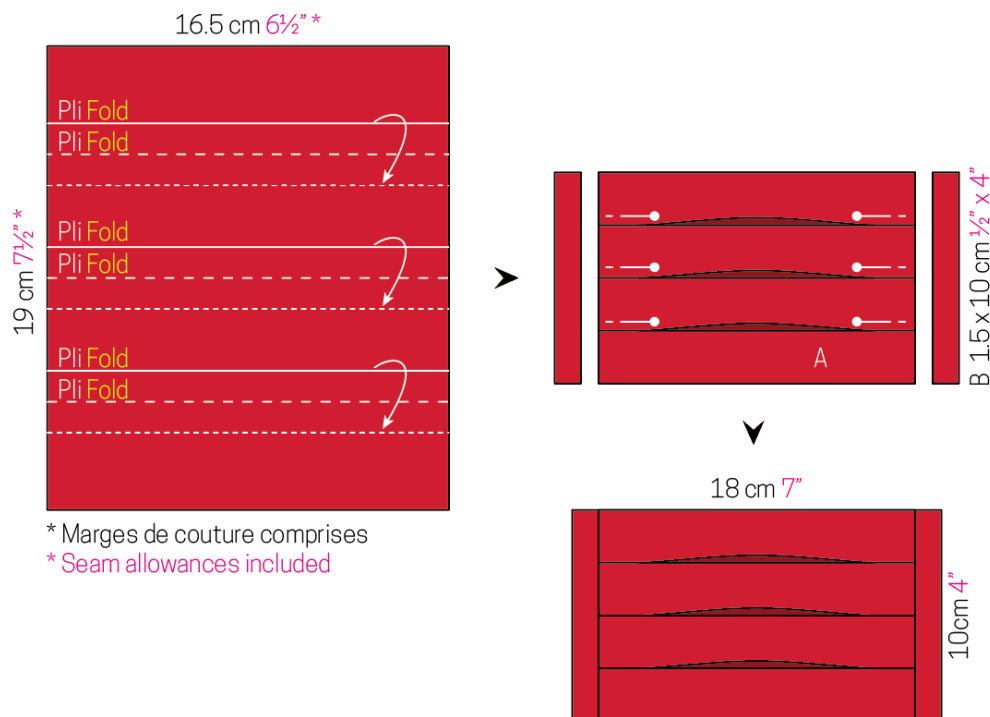
Cutting :

- From one red fabric, cut the following:
 - one 16.5 x 19 cm ($6\frac{1}{2}$ " x $7\frac{1}{2}$ ") rectangle, to yield **one A piece**
 - two 3 x 11.5 cm (1 " x $4\frac{1}{2}$ ") B rectangles
- From one grey fabric:
 - four 3 x 9 cm (1 " x $3\frac{1}{2}$ ") C rectangles
- From one pink fabric:
 - two 9 x 16.5 cm ($3\frac{1}{2}$ " x $6\frac{1}{2}$ ") D rectangles
 - two 5 x 26.5 cm (2 " x $10\frac{1}{2}$ ") E strips

Assembly :

Diagram 1: Transfer the various reference marks from the template onto the right side of the rectangle of red fabric. Make the folds, pleating the fabric along the dotted-line markings. Pin to hold the folds in place.

Stitch one B rectangle to either side to obtain the centre part of your block.



QUILTmania

Diagram 2: Stitch one C rectangle to either side of each D rectangle. Stitch these units to the top and bottom of the previous unit. Complete your block by adding one E strip to either side.

