

Block 48 – Miriam Jones

General instructions :

The measurements in the explanatory diagrams do not include seam allowances, except for those diagrams that specify “*Seam allowances included”.

For the templates, add a seam allowance of 7 mm ($\frac{1}{4}$ ”) all around.

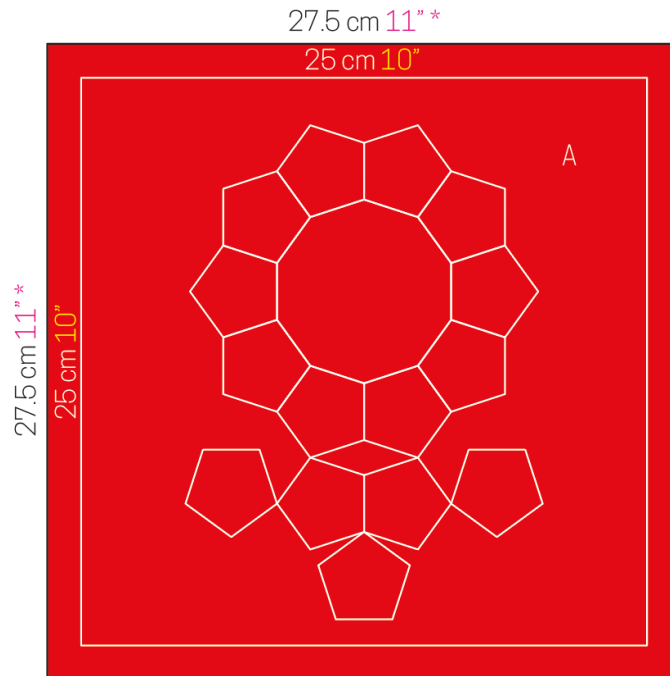
Cutting :

- From one red fabric for the background, cut the following:
 - one 27.5 cm (**11**”) A square; extra fabric is allowed when cutting to facilitate working the appliqués
- From one beige fabric with polka dots:
 - one B piece
- From one red fabric with checks:
 - five C pentagons
- From one fabric with flowers, fussy cut:
 - five C pentagons, each centred on one flower
 - two of leaf 3, each centred on one leaf
- From a second dark red fabric with checks:
 - three C pentagons
- From a third red fabric with small checks:
 - two C pentagons
- From one pink fabric:
 - one flower 1
- From one fabric with small flowers:
 - one circle 2

QUILTmania

Assembly :

Diagram 1: Mark one 25 x 25 cm (10" x 10") square on the right side of the A square. Using a light source, transfer the motif outlines.



* Marges de couture comprises

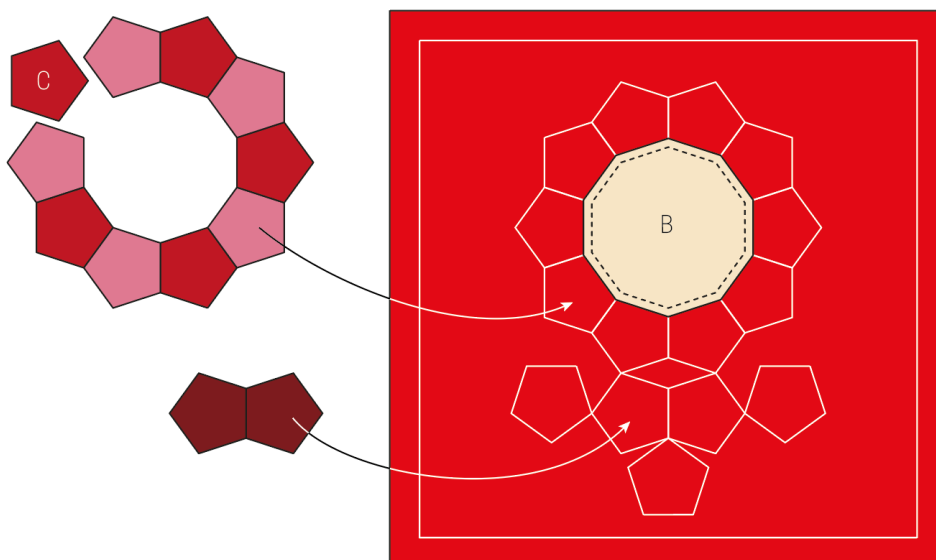
* Seam allowances included

Diagram 2: Position and baste the B piece in the centre.

Baste your fabric C pentagons on paperboard pentagons measuring 2.5 cm (1") for English paper piecing.

Stitch together the two sets of five identical pentagons, alternating them. Press and remove the paper templates then place the unit obtained around the B piece.

Work the appliqués on the inner and outer edges, using the traditional method and working small invisible stitches. In the same way, appliqué the other C pentagons.



QUILTmania

Diagram 3: Complete with the appliqué for flower 1, circle 2 and leaf 3.
Recut the appliqué block to 26.5 x 26.5 cm (10¹/₂" x 10¹/₂"), seam allowances included.

