

## Block 12 – Tone Finnanger

### General instructions :

The measurements given for cutting include seam allowances of 7 mm ( $\frac{1}{4}$ " ), rounded to 15 mm ( $\frac{1}{4}$ " ) for two seams. Make any necessary adjustments.

The measurements in the explanatory diagrams do not include seam allowances, except for those diagrams that specify "\*Seam allowances included".

For those using the traditional cutting method, note that you will find:

- the templates on the pattern; add seam allowances to them
- the quantities **in bold** in the Cutting section

### Cutting :

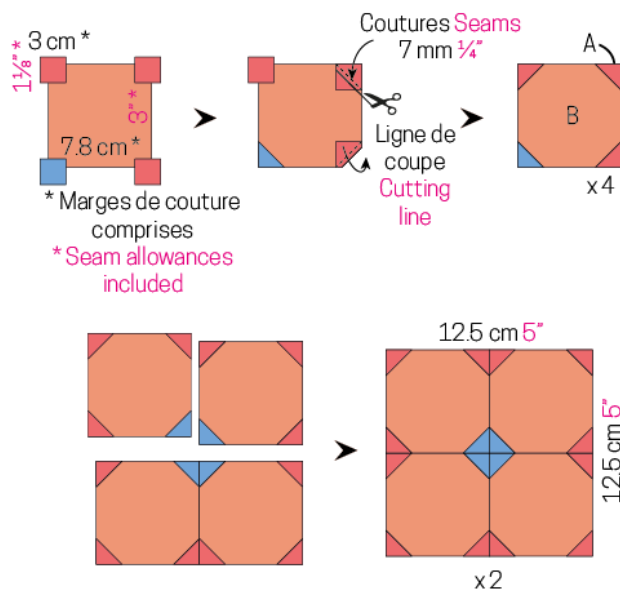
- From one pink semi-solid fabric, cut the following:
  - twenty-four 3 cm ( $1\frac{1}{8}$ " ) squares, to yield **twenty-four A triangles**
  - eight 4 cm ( $1\frac{1}{2}$ " ) squares, to yield **eight C triangles**
  - four 3.5 x 7 cm ( $1\frac{1}{4}$ " x  $2\frac{3}{4}$ " ) E rectangles
  - four 7 x 8 cm ( $2\frac{3}{4}$ " x  $3\frac{1}{4}$ " ) F rectangles
- From one blue semi-solid fabric:
  - eight 3 cm ( $1\frac{1}{8}$ " ) squares, to yield **eight A triangles**
- From each fabric from an assortment of two coloured print fabrics:
  - four 7.8 cm (**3"**) squares, to yield **four B pieces** of each fabric
- From one pale pink fabric:
  - four 5.5 x 7 cm (**2" x  $2\frac{3}{4}$ "**) rectangles, to yield **four D pieces**
  - two 3 x 14 cm (**1" x  $5\frac{1}{2}$ "**) G strips

# QUILTmania

## Assembly :

**Diagram 1:** Place three 3 cm ( $1\frac{1}{8}$ " ) pink squares and one blue square of the same size, right sides together and edge to edge, in the corners of one 7.8 cm ( $3$ " ) assortment square. Stitch along the diagonals of each square, cut away the excess fabric at 7 mm ( $\frac{1}{4}$ " ) from the seam and turn.

Repeat these steps to obtain four identical units. Referring to the diagram to orient each unit, stitch them together in twos and join them to obtain one Flower block. Following the same steps make two Flower blocks in total.

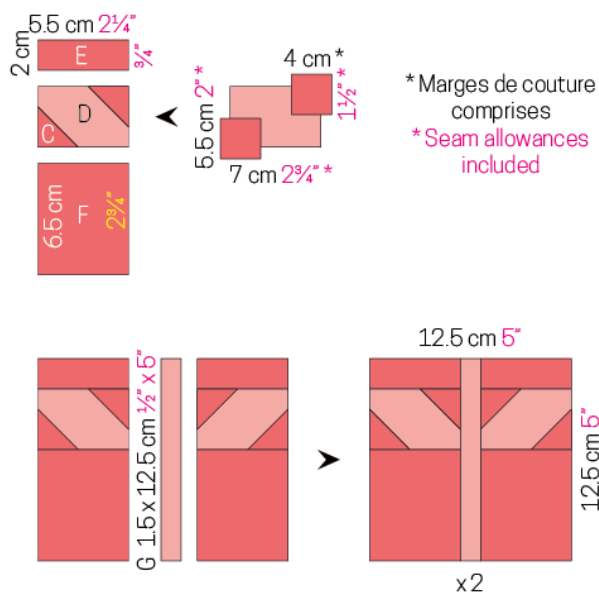


**Diagram 2:** In the same way, stitch one 4 cm ( $1\frac{1}{2}$ " ) square, right sides together and edge to edge, in the opposite corners of one 5.5 x 7 cm ( $2$ " x  $2\frac{3}{4}$ " ) rectangle. Stitch along the diagonals of each square, cut away the excess fabric at 7 mm ( $\frac{1}{4}$ " ) from the seam and turn.

Add one E rectangle to the top and one F rectangle to the bottom.

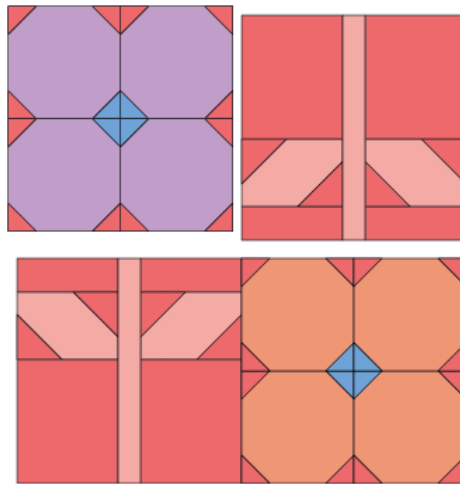
Repeat these steps to obtain two symmetrical units and join them to either side of one G strip to obtain one Stem block.

Repeat these steps to obtain two Stem blocks in total.



# QUILTmania

**Diagram 3:** Referring to the diagram to orient each block, stitch each Flower block to one Stem block and join these units.



25 cm 10"